



Mena Advertising & Promotion Commission
479-394-8355
www.VisitMena.com

Your Ouachita Mountain Adventure
Begins Here



King | Super King | Super King Deluxe
Executive King | Double Queen
Outdoor Swimming Pool | Wi-Fi
Cable TV | Close to Local Restaurants
No Pets Please

While visiting Mena, try *Country Express* for the
best BBQ and catfish in town!
Now offering Catering Service!



1309 Highway 71 N. Mena, AR 71953
Reservations: 1-877-394-7477
479-394-7477 | www.suncountryinn.com

Table of Contents

Attractions.....3-8

Outdoors.....9-12

Calendar of Events.....14

City & Area Map..... Center-spread

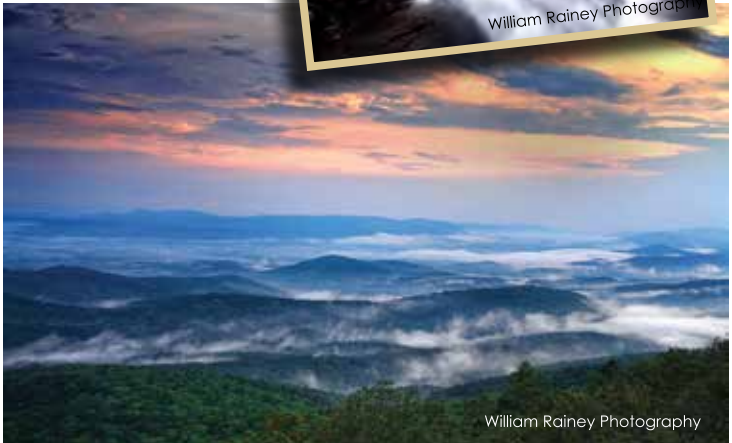
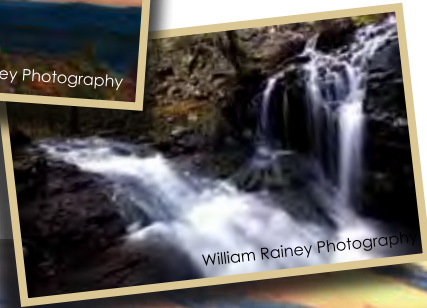
Relocation.....19-20

Places to Eat..... 21

Places to Stay.....23-24

Aubrey Tapley Park.....25

Cover Photos by William Rainey Photography



Attractions



Cossatot State Park Natural Area



The park's vivid combination of natural vegetation, rugged topography, exposed rock formations & untamed river corridor make it something to see! Visit the park, take a picnic and hike along the Cossatot River. Check out the interactive exhibits that

tell the history of the area. For more information, call: 870-385-2201 or email: cossatot@arkansas.com. There is no outfitter along the Cossatot so be sure to pack your own gear.

Ouachita National Forest

Mena is your gateway city to the splendor of the Ouachitas! The Ouachita National Forest is a vast 1.8 million acre mountainous forest and is the South's largest and oldest national forest. The forest is noted for its picturesque scenery,



clear lakes and rivers, waterfalls, natural springs, untouched wilderness and abundant wildlife.



William Rainey Photography



Talimena National Scenic Byway



Particularly popular during the Autumn season, for its awesome colors, the drive is enjoyed by thousands each year. Mena serves as the gateway to the national byway. It is a gorgeous 54 mile route which spans one of the highest mountain ranges between

the Appalachians and the Rockies. The drive offers lodging, picnicking, hiking and camping and the journey begins in beautiful downtown Mena.

Queen Wilhelmina State Park

One of the most popular local attractions can be found 13 miles northwest of downtown. Built near the highest peak in the Ouachita Mountain Range, Queen Wilhelmina State Park, is also known as "The Castle



in the Sky." Queen Wilhelmina is Mena's crown jewel and is located just 13 miles northwest of town. The majestic panoramic views from the Park are spectacular, and true to its name, makes guests feel like visiting royalty!



Aubrey D. Tapley Park



This Park includes facilities for soccer, baseball and softball. Facilities also include walking/bike trails, 2 playgrounds, and food concessions with pavilion. The complex is a popular site for events such as the 4th of July Celebration and

many tournaments throughout the year. (See page 25 for more pictures and information.)

Historic Janssen Park

This is no ordinary community park! This brilliant 10 acre park is host to an 1851 log cabin rumored to have been used as a hideout by the notorious Jesse James, besides being used as a hospital, post office, and city hall during



its lifetime. The park also contains 2 spring fed ponds, 2 Mountain Howitzer Cannons, a bronze boy and girl fountain purchased in 1914 among other interesting artifacts. No wonder it is listed on the National Register of Historic Places! Janssen Park is a favorite among the locals and vacationers.

Mena Depot



Reminiscent of 'days gone by,' you can almost hear the conductor shouting "All Aboard." The Depot serves as the focal point and most recognizable building in Mena. Built in 1920, the beautifully restored

train depot greets visitors as they travel U.S. Highway 71. It serves as a museum housing local history, artifacts and art, as well as, the Chamber of Commerce and a 1939 restored Dodge police car, fondly referred to by locals as "Flossie."

Wolf Pen Gap



Hugely popular with ATV riders is the Wolf Pen Gap Trails. The system offers 41 miles of looping trails that are connected to accommodate riders who want to vary the length of their trips. The trails feature high mountain vistas, a unique two foot tall oak tree and

an abandoned mine shaft. Trails range from easy to most difficult and wind through some of the most rugged and secluded areas of the Ouachita National Forest.

Little Missouri Falls

Little Missouri Falls is a stair step fall in a deep gorge that attracts photographers and visitors. The falls can be reached by an all-weather gravel road, and there is a parking area with rest rooms and a paved trail leading to observation sites. Picnic tables and barbeque grills are available for visitors.



Board Camp Crystal Mine



Board Camp Crystal Mine is a day use camp, with an actual native, untapped crystal mine and public dig site. The surface is literally scattered with sparkling quartz crystals of various shapes and sizes.

Everyone can find crystals to take home with them!



DIG...

"Treasure for Pleasure"

Polk County's latest attraction...
a **BRAND NEW** Crystal Mine!
You will be the **FIRST** to unearth, see and touch the age-old crystals! A true rock hounding experience awaits you!

Open Daily April 1 - October 31
479-243-0771 (for reservations)
www.boardcampcampground.com

Mountain Glory Station



Panoramic beauty will surround you atop Rich Mountain as you board on of the area's biggest attractions! The flowers, foliage, wildlife and clean mountain air will bring you back to us time and again. For seasonal hours of operation and

availability, call 479-437-3331 as you plan your vacation in our beautiful Ouachita Mountains!

Antiquing & Shopping

Search for the perfect souvenir or your piece of history at one of Mena's many antique dealers. Where "old" is "new." Explore the fine workmanship of these treasures crafted with such pride! Also enjoy boutique shopping at one of our downtown shops.



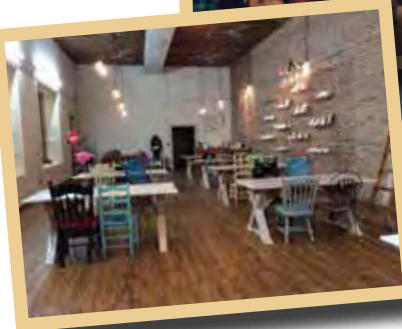
Cossatot River State Park



Just South of Mena is Arkansas' newest State Park. The park includes 11 miles of one of the most rugged and spectacular river corridors in the central United States. With over 5,302 acres of

rugged wooded slopes, trails, outstanding geological features, cascading clear water and Class III, IV, and even Class V rapids, the Cossatot is a favorite with skilled canoeists, rafters and kayakers. The challenging waters of the Cossatot is not recommended for beginners.





The Arts



North Mena Street is quickly becoming a hub for the arts in the Ouachitas. Browse the unique art at the Mena Art Gallery and American Artisans; create your own art at Chameleon Arts; and then catch a live show at the Ouachita Little

Theatre. Go to www.VisitMena.com for more information about the arts in Mena.



Ouachita Little Theatre

Featuring live performances by local actors throughout the year!

610 Mena Street
Mena, AR 71953
479-243-0186

www.oltmena.com



Outdoors



Rivers



Mena boasts five rivers that flow through the surrounding area: the Ouachita; Cossatot; Caddo; Little Missouri; and Mountain Fork. Nature is at its purest form offering visitors opportunities to fish, float, swim, canoe, kayak, camp or take pictures. A number

of cabin rentals and lodges offer spectacular views and direct access to the rivers and ATV trails. Visit our "Stay" page at VisitMena.com.

Lakes

Lakes offer a variety of recreational activities year round. So whether your desire is boating, fishing, camping, swimming, skiing, or personal water craft... the perfect ingredients for a great vacation... we have a lake in our area that is guaranteed to float your boat! Four lakes are within 45

minutes, or less, from Mena, they include: Wilhelmina, Gillham, DeQueen and Arkansas' largest lake, Lake Ouachita.



Sun - Thurs 10am - 9 pm
Friday & Sat 10am - 10pm

Banquets/Event Catering
& Carry-out Orders

Wifi, Meeting Room w/Projector

479.394.6521 / Fax: 479.394.6461

1506 Hwy 71 South www.PapasMena.com



Canoeing / Kayaking



Defined by the Natural Park Service as "the most challenging whitewater float in Arkansas," Cossatot's waters are not for the casual paddler. The river's characteristics give it Class IV/V ratings and it's easy to see why the Indian name for Cossatot was "skull

crusher." Late Winter to early Spring is peak whitewater season for the river. No outfitter is on site, so be sure to pack your own gear.

Hiking

The incredible scenery and terrain of the area offers great hiking opportunities. Caney Creek, Athens-Big Brushy, Billy Creek, Wolf Pen Gap and the largest in the state of Arkansas, Ouachita National Recreational Trail. Trails all start in or near Mena. For maps of trails, see the "Hiking" section at VisitMena.com



Fishing



With the area's abundant lakes, rivers, and streams, you're guaranteed to get hooked on a Ouachita vacation. Bass fishing can be enjoyed most months of the year and in all the area's lakes and rivers. Our waters

offer a variety of the bass species. Other catches may include crappie, perch, and on the Little Missouri River, cool season trout fishing.

Cycling

Whether you're searching for a phat tire trail, a nice scenic road ride or maybe just wanting to cruise around town, you've just discovered why Mena is popular among cyclists! We are host to such cycling events as the



Ouachita Challenge and Wheel A' Mena Bike Tour. We invite you to come and explore our trails...we guarantee you'll be back to visit us time and again. Be sure and bring your friends!

ATV & Mountain Biking



Hugely popular with ATV riders is the Wolf Pen Gap Trails. The system offers 41 miles of looping trails that are connected to accommodate riders who want to vary the length of their trips. Trails range from easy to most difficult and

wind through some of the most rugged and secluded areas of the Ouachita National Forest. Featuring high mountain vistas, the trail leads the rider through an array of areas, including scenic Gap Creek and Board Camp Creek. The trail continues through a forest of large pines and hardwoods before passing the unique 2-footed oak tree and an abandoned mine shaft.

Fall Foliage

Autumn's changing colors bring the Ouachitas to life! Thousands make the journey here each year to witness the beauty up close. Local and national artists have used our splendid backdrop as the focus of paintings and photography. Whether you're traveling down an old country road or the middle of our historic downtown, or a mountainous scenic route, you'll be in awe of the bonanza of colors our deciduous trees turn in the Fall season. Peak foliage occurs during late October and early November, but can vary from year to year. For optimum viewing of the color change, call 479-394-8355 for a current "report of the colors". We encourage you to be prepared with plenty of memory or film for your camera as the photo opportunities are plentiful!



Golf



While enjoying the beautiful Ouachita Mountains be sure and plan a day or two on one of our two golf courses, Ouachita Golf Course & Mena Golf Club. You are sure to have a "ball". Golf carts

are available. The Mena Golf Club can be found at 500 Lions Club Road just off Hwy 71 S (479-243-0699) or the Ouachita Golf Course is located just off Hwy 88 E (479-394-5382).

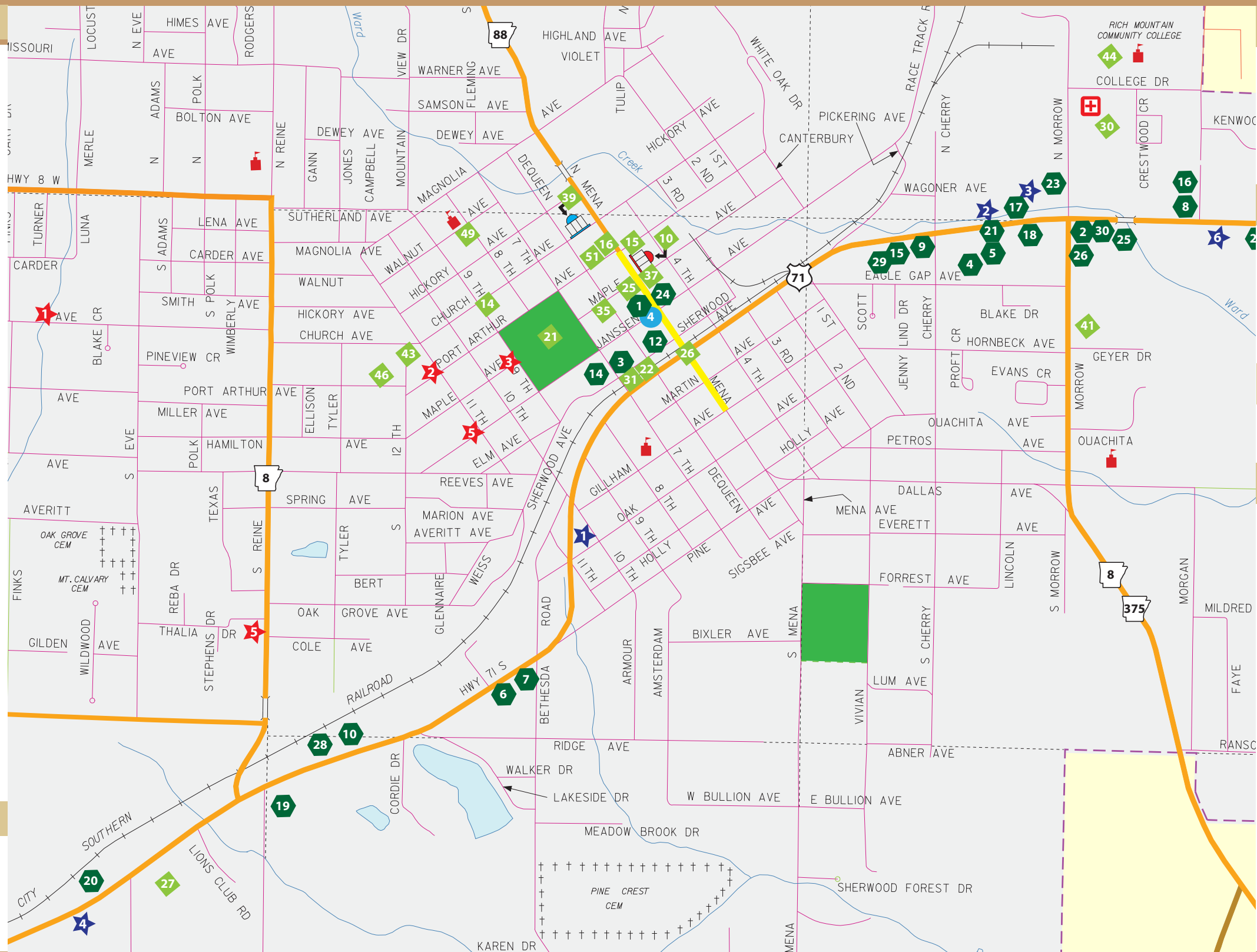


Points of Interest

- Abernathy Springs**
Side B
- American Legion/Veteran's Park**
Side B
- Arkansas Native Plant & Wildlife Center**
Side B
- Bee Mountain Fire Tower (Historic)**
Side B
- Blue Hole**
Side B
- Board Camp Crystal Mine**
Side B
- Chameleon Arts**
Side A
- City Hall (Historic Old Post Office)**
Side A
- CMA Iron Mountain**
Side B
- CMA National/International Support Center**
Side B
- Ebenezer Monument (Historic)**
Side A
- Elks Lodge (Historic)**
Side A
- Esso Gas Station (Historic)**
Side A
- Forest Service Ranger Station**
Side A
- Forest Service Visitor's Center**
Side A & B
- Industrial Park**
Side A
- Janssen Park (Historic)**
Side A
- KCS Depot Museum (Historic)**
Side A
- Lum & Abner Museum**
Side B
- Mena Art Gallery**
Side A
- Mena Commercial District (Historic)**
Side A
- Mena Golf Course**
Side B
- Mena Intermountain Municipal Airport**
Side B
- Mena/Oden Ranger Station**
Side B
- Mena Regional Health System**
Side A
- Mena/Polk County Chamber of Commerce**
Side A
- Mountain Fork Bridge (Historic)**
Side B
- Mountain Glory Station**
Side B
- Municipal Aviation Complex**
Side B
- National Guard Armory (Historic)**
Side A
- Ouachita Country Club Golf Course**
Side B
- Ouachita Little Theatre**
Side A
- Pioneer Cemetery**
Side B
- Polk County Court House (Historic)**
Side A
- Polk County Fairgrounds**
Side B
- Post Office**
Side A
- Queen Wilhelmina Lodge (Historic)**
Side B
- Old Redman Hospital (Historic)**
Side A
- Rich Mountain Community College**
Side A
- Renegade Ranch ATV Trails**
Side B
- Scoggins House (Historic)**
Side A
- St. Agnes Catholic Church (Historic)**
Side A
- State Line Marker (Historic)**
Side B
- Studebaker Building (Historic)**
Side A
- Talimena National Scenic Byway**
Side A & B
- Tall Peak Fire Tower (Historic)**
Side B
- Tapley Park**
Side A
- Wolf Pen Gap ATV Trail System**
Side B
- Wonder House (Historic)**
Side B
- McMillan Park**
Side A

Lakes

- Gillham Lake**
Side B
- Irons Fork Lake**
Side B
- Mena Lake**
Side A & B
- Shady Lake**
Side B
- Lake Wilhelmina**
Side B



Hotels & Motels

- Budget Inn**
1018 Hwy 71 S 479-394-2400
Side A
- Executive Inn**
704 Hwy 71 N 479-394-3710
Side A
- Limetree Inn**
804 Hwy 71 N 800-536-4366
Side A
- Ozark Inn**
Hwy 71 S 479-394-1100
Side A
- Queen Wilhelmina Lodge**
Hwy 88 W 800-264-2477
Side B
- Sun Country Inn**
Hwy 71 N 877-394-7477
Side A

Bed & Breakfasts

- ABear's Den**
2205 Church Avenue 479-394-8419
Side A
- The Carriage House Inn**
1202 Port Arthur 479-243-0957
Side A
- Janssen Park Place**
511 9th Street 479-394-1880
Side A
- Johnson Manor Bed & Breakfast**
600 11th Street 214-274-4281
Side A
- Rainey Day Resort**
1407 S Reine St 479-234-1273
Side A

Resort

- Mena Mountain Resort**
2817 Hwy 71 N 479-394-3100
Side A

Cabins | Campsites | RVs

- Adventure Trails & Retreat**
254 Polk 602 479-394-5505
- ATV Trail House**
2274 Hwy 375 E 479-394-1724
- Backwoods Lodge**
560 Polk 78 870-818-0892
- Boardcamp Campground**
Polk 62 479-243-0771
- Buckeye Retreat**
Sugar Creek Valley 479-243-5582
479-234-8201 or 479-216-8432
- Dreamland Vacation Resort**
269 Hwy 375 E
479-234-8201 or 479-216-8432
- Clear Sky Ridge**
383 Massey Ln 479-274-0759
- CMA Cabins and RV Camping**
4278 Hwy 71 S 870-389-6196
- Cornerstone Mountain Retreat**
Polk 26 479-216-2495
- Cossatot River Wilderness Lodge**
310 Dogwood 479-385-1111
- Eagle Valley Hideaway**
117 Polk 600 479-394-1613
- Hawkins Ranch Cabins & Retreat**
Polk 26 870-389-6397
- Kate's Creek Cabins**
Polk 675 479-234-3654
- McCurdy's Gateway**
223 Polk 64 479-414-8218
- Meadow Pine Cabins**
Hatfield 479-243-3752
- Mena Hillside Cabins**
128 Roadrunner Ln 903-643-2186
- Mena Mountain Top Cabins**
141 Cabins Lane 479-216-1598
- Mountain Fork River Resort**
Hatfield 479-243-5812
- Ouachita River Haven Resort**
127 Ouachita River Haven Road,
Pencil Bluff 870-326-4941
- Outback Cabins**
Pine Lane 479-394-3689
- Polk County Fairgrounds RV Park**
Fairgrounds Rd 479-243-8104
- Queen Wilhelmina State Park**
Hwy 88 W 800-264-2477
- Renegade Ranch**
3680 Hwy 88 E 479-394-3848
- Rich Mountain Log Cabins**
1217 Hwy 71 S 479-243-9400
- Riverside Retreat**
Polk 153 479-234-1926
- Shadow Mountain RV Park**
3708 Hwy 71 S 479-394-6099
- Shadowrock Log Cabin Resort**
1216 Polk 602 479-243-5720
- Shady Lake Recreation Area**
Hwy 246
- Sugar Creek Lodge**
135 Polk 602 866-394-7747
- Ward Mountain Lodge**
126 Polk 453 479-234-8556

Cabins | Campsites | RVs ●

- 32. Willowbrook Cottage & Cabins
1047 Polk 42 479-883-5492
- 33. Wolfpen ATV Campground
559 Polk 61 479-394-0404
- 34. Wolf Pen Creek Cabins
1314 Polk 61 479-394-1844
- 35. Wolf Pen Cabins
1255 Polk 61 214-505-5461
- 36. Wolf Trail Cabins
118 Road Runner Ln 817-999-8449
- 37. Woodhaven
1044 Polk 42 479-883-5492

State Parks ▲

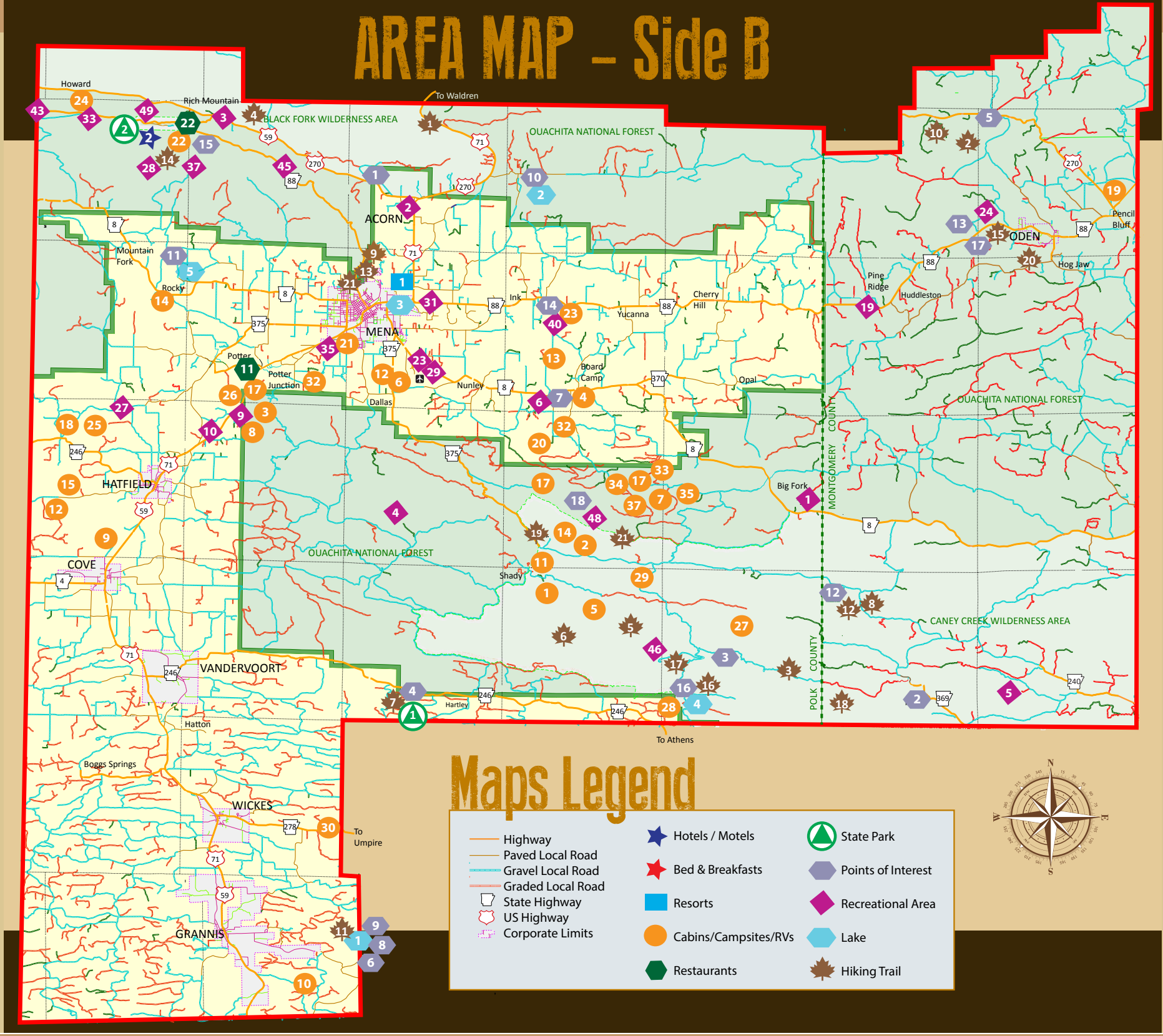
- 1. Queen Wilhelmina State Park
Side B
- 2. Cossatot River State Park
Side B

Recreational Areas ◆

- 1. Acorn Shooting Range
Side B
- 2. Albert Pike (Day Use Only)
Side B
- 3. Bard Springs
Side B
- 4. Brushy Creek
Side B
- 5. Big Brushy
Side B
- 6. Big Coon Creek
Side B
- 7. Board Camp Crystal Mine
Side B
- 8. Coon Creek
Side B
- 9. Cossatot Reefs
Side B
- 10. Irons Fork Lake
Side B
- 11. Lake Wilhelmina
Side B
- 12. Little Missouri Falls
Side B
- 13. Oden Shooting Range
Side B
- 14. Renegade Ranch Arrowhead Field
Side B
- 15. Rich Mountain Lookout Tower
Highest Point in Ouachita Mountain Range 2,681 feet
Side B
- 16. Shady Lake
Side B
- 17. Shirley Creek
Side B
- 18. Wolf Pen Gap
Side B

Hiking Trails 🍁

- 1. Ouachita National Recreational Trail
Side B
- 2. Big Brushy Trail Complex
Side B
- 3. Big Fork Trail
Side B
- 4. Black Fork Mountain Trial
Side B
- 5. Buckeye Trail
Side B
- 6. Caney Creek Wilderness Trail
Side B
- 7. Cossatot River Natural Area
Side B
Brushy Creek Nature Trail
Waterleaf Interpretive Trail
Harris Creek Trail
River Corridor Trail
- 8. Eagle Rock Loop
Side B
- 9. Earthquake Ridge
Side A & B
- 10. Fourche Mountain Trail
Side B
- 11. Gillham Lake Walking Trail
Side B
- 12. Little Missouri Trails
Side B
- 13. Orchard Trail
Side A & B
- 14. Queen Wilhelmina State Park
Side B
Lovers Leap Trail
Reservoir Trail
Spring Trail
- 15. Serendipity Trail
Side B
- 16. Shady Lake Trail
Side B
- 17. Tall Peak Trail
Side B
- 18. Viles Branch Equestrian Trail
Side B
- 19. Wolf Pen Gap Trail System
Side B
- 20. Womble Trail
Side B
- 21. Ward Lake Hiking Trail
Side A & B



Maps Legend

- Highway
- Paved Local Road
- Gravel Local Road
- Graded Local Road
- State Highway
- US Highway
- Corporate Limits
- Hotels / Motels
- Bed & Breakfasts
- Resorts
- Cabins/Campsites/RVs
- Restaurants
- State Park
- Points of Interest
- Recreational Area
- Lake
- Hiking Trail



Photos by William Rainey Photography



Restaurants

- 1 American Artisans**
615 Mena St 479-394-1112
Side A
- 2 Baskin Robbins**
901 Hwy 71 N 479-394-1572
Side A
- 3 The Branding Iron**
1110 Hwy 71 S 479-437-3240
Side A
- 4 New China Restaurant**
601 Hwy 71 N 479-394-5534
Side A
- 5 Chiquita's Mexican Restaurant**
703 Hwy 71 N 479-394-6201
Side A
- 6 Chopping Block
Steakhouse & Seafood**
Hwy 71 S 479-394-6410
Side A
- 7 Country Express**
1146 Hwy 71 S 479-394-7310
Side A
- 8 The Corner**
1100 Hwy 71 N 479-394-1120
Side A
- 9 Cruizzers Drive-In**
Hwy 71 N 479-394-5550
Side A
- 10 Donut Palace**
1321 Hwy 71 S 479-437-3881
Side A
- 11 Fish Net**
3544 Hwy 71 S 479-394-4079
Side B
- 12 Friendship House**
517 Sherwood Ave 479-394-2385
Side A
- 13 IL Primos Pizza**
102 Hwy 270 479-243-0303
Side B
- 14 James' Supersave Deli
(Champs Chicken)**
707 7th St 479-394-1799
Side A
- 15 Kentucky Fried Chicken**
403 Hwy 71 N 479-394-5482
Side A
- 16 La Villa Mexican Restaurant**
1100 Hwy 71 N 479-243-0822
Side A
- 17 Limefree Restaurant**
804 Hwy 71 N 479-394-4702
Side A
- 18 McDonald's**
709 Hwy 71 N 479-394-1131
Side A
- 19 Papa's Mexican Cafe**
1506 Hwy 71 S 479-394-6521
Side A
- 20 Pit Masters**
2011 Hwy 71 S 479-437-3040
Side B
- 21 Pizza Hut**
703 Hwy 71 N 479-394-5952
Side A
- 22 Queen's Restaurant**
Queen Wilhelmina State Park
479-394-2863
Side B
- 23 Simple Simon's Pizza**
106 N Morrow St 479-394-0300
Side A
- 24 Skyline Cafe**
618 Mena St 479-394-5152
Side A
- 25 Sonic Drive-In**
1001 Hwy 71 N 479-437-3001
Side A
- 26 Sophie's Cafe Donuts & Grill**
1411 Morrow St 479-394-1788
Side A
- 27 Spinelli's Caf **
1411 Hwy 71 N 479-394-3737
Side A
- 28 Subway
Sandwiches & Salads**
1425 Hwy 71 S
& Inside Walmart 479-394-2510
Side A
- 29 Taco Bell**
403 Hwy 71 N 479-394-5482
Side A
- 30 Wendy's**
901 Hwy 71 N 479-394-1572
Side A



Eatery & Gallery

*Home of the Famous Chicken Melt,
Homemade Potato Chips & Espresso Cookies!*

615 Mena Street * 479.394.1112
www.americanartisans.net

Festivals & Events

There is always something fun going on in Mena! Mena is a popular destination for hot rodders, crafters, motorcyclists, photographers, ATVers, antiquers, outdoor enthusiasts, cowboys and everyone else in between. Basically, Mena has something for everyone. Some popular events that draw thousands to the area each year include:

March

CMA Pastors Retreat - *CMA Iron Mountain*
Talimena 13.1 Half Marathon - *Janssen Park*

April

Kelly Miller Circus - *Polk County Fair Grounds*
Ouachita Challenge Bike Race & Tour - *Oden, AR*

May

Annual Garden Show & Plant Sale - *Polk County Fairgrounds*
Saturday Night at the Lyrics - *Ouachita Little Theatre*
Relay for Life - *Janssen Park*

June

Lum & Abner Festival - *Janssen Park*
Lum & Abner Car Show - *Janssen Park*
Lum & Abner Softball Tournament - *Aubrey D. Tapley Park*
Lum & Abner 5K Run - *Janssen Park*
Ouachita Quilt Show - *Historic National Guard Armory*
CMA National Rally - *CMA Iron Mountain*
Peak to Peak Motorcycle Poker Run - *Queen Wilhelmina State Park to Mount Magazine State Park*
Jubilee In June - *Hatfield, AR City Park*

July

Mena Fourth of July Celebration - *Aubrey D. Tapley Park*

August

Queen Wilhelmina Rod Run - *Queen Wilhelmina State park and Downtown Mena*
Polk County Rodeo - *Polk County Fairgrounds*

September

Polk County Fair & Livestock Show - *Polk County Fairgrounds*
MountainFest Craft Show - *CMA Iron Mountain*

October

CMA "Changing of the Colors" Rally - *CMA Iron Mountain*
Daylight Trick-or-Treat - *Downtown Mena Merchants*

November

Fall Foliage - *Talimena National Scenic Byway & Local Area*
Saturday Night at the Lyrics - *Ouachita Little Theatre*

December

Christmas Festival - *Janssen Park*
Christmas Parade of Lights (Night-time Parade) - *Mena Street*
Annual Holiday Play - *Ouachita Little Theatre*

Go To:

www. **VisitMena**.com
for a detailed Events Schedule!

Festivals & Events



MountainFest

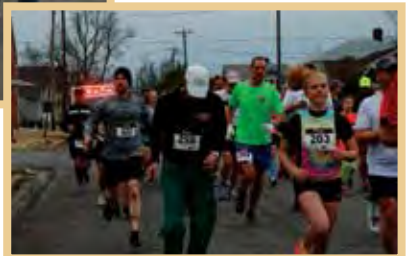


The craft show features fine quality arts and crafts handmade by artisans from all over the country. You will enjoy this fun experience which includes fascinating craft demonstrations throughout the weekend. Hosted in September by

the Ouachita Arts & Crafts Guild. Call 479-394-0044 for more information.

Talimena 13.1 Run & Relay

This race formerly called the Rich Mountain Classic, was first run in 1986 and continued through 1990, using the Janssen Park to the Queen Wilhelmina Lodge race route. This half Marathon is held in March and now begins in Janssen Park in beautiful downtown Mena, follows Talimena Scenic Byway and ends at Queen Wilhelmina State Park. The Byway is called the "scenic" for a reason as the drive from Mena to the State Park and Lodge is beautiful with many breathtaking views and overlooks.





Lum & Abner Festival



Calling all the young and young at heart! Join us each June for Mena's signature event that has something for every age group! Events include arts and crafts, food, car show, live entertainment all weekend, Kiddie Korner, 5k fun run, 3 on 3 basketball

tournament, baby crawlin' contest, BBQ cook off, firefighter's challenge, fishing derbies and much more!

Wheel A' Mena Tour to the Top

The Wheel A' Mena Bicycle Tour is staged in downtown Mena. Two tour distances are offered of either a 70 mile route or a 30 mile route. This ride provides some of the best scenic views in Arkansas with much of the ride being high atop the Ouachita



Mountains on the Talimena Scenic Drive. The ride also proves to be quite a challenge as there are multiple steep climbs. There are multiple steep climbs on each route. Both routes take you through the Queen Wilhelmina State Park.



Christmas Festival, Parade & Fireworks



Watch downtown Mena explode with Christmas cheer! Mena's largest evening parade sets the stage followed by an awesome fireworks show to officially light up Janssen Park in thousands of twinkling lights. Shop for the

perfect Christmas gift among many of our merchants, listen to a live Christmas concert, have your picture made with Santa or get a warm drink or snack from the local vendors...all within walking distance.

Wilhelmina Rod Run

One of the region's top events, this car show draws close to 200 top restored classic cars, street rods and muscle cars and is a long standing tradition for car buffs. Cars are displayed at Queen Wilhelmina State Park by day



and downtown Mena at night and held in late August each year. Downtown concerts, street dances, and tours of local car museums are also part of the very popular weekend.

Polk County Fair & Livestock Show



Enjoy one of the country's largest events in early September, located at the Polk County Fairgrounds. This event includes a growing midway full of all your favorite rides and terrific food. Stop by and

visit the Commercial Building showcasing many of the local businesses. Other displayed items are local students' art work, fabulous photography, and many will be competing with their home grown vegetables, flowers, jams, jellies and more. Support local FFA organizations and students at the Livestock Show.



Polk County Rodeo

Located at the Polk County Fairgrounds in early August, the exciting rodeo events include bull riding, bucking horses, team roping, barrel racing, calf scrambles, muttin' bustin', and more at one of the largest rodeos in the area! Complete with



parade, Queens, Princess, and Tiny Britches contest, dance and the always entertaining rodeo clowns.

Farmer's Market & Area Farms



The Farmer's Market is located at the Mena Depot, seasonally, featuring home grown and prepared specialties by local farmers and bakers. Contact the Polk County Cooperative Extension Office for

dates and times, by calling 479-394-6018. Also, several you-pick farms are available offering blueberries, blackberries, etc.

Relocation



Top Ten Reasons to Retire or Relocate in Mena...

1. Plentiful outdoor recreation opportunities such as fishing, hiking, ATVing, etc.
2. Pleasant weather that allows you to experience all 4 seasons, but none too extreme
3. Top notch educational community with strong public school system and community college
4. An expansive medical community and facilities
5. Strong spiritually based community offering many different denominations
6. Low cost of living
7. Cultural attractions & events such as art, theater and local museums
8. Affordable housing and real estate
9. Many civic clubs and organizations that allow you the opportunity to get involved and/or volunteer
10. Low crime rate



Assisted Living Community



A Place to Call Home

Our goal at The Oaks is to create an affordable, safe, peaceful environment, while encouraging personal independence.

SERVICES PROVIDED

- Great home cooking three times a day
- Nutritious snacks daily
- Active social and recreation program
- Weekly housekeeping and linen service
- All utilities (excluding phone)
- Scheduled transportation for local appointments, shopping and community activities
- Non-smoking environment
- Daily assistance with personal hygiene and/or dressing

OFFICE: 479.243.0033 / FAX: 479.394.1204
1341 South Mena Street / Mena, Arkansas
www.theoaksatmena.com



Helpful Phone Numbers

Healthy Connections, Inc.....	479-437-3449
Mena Art Gallery.....	479-394-3880
Mena City Hall.....	479-394-4585
Mena Intermountain Municipal Airport.....	479-394-4077
Mena/Polk County Chamber of Commerce..	479-394-2912
Mena Ranger Station.....	479-394-2382
Mena Regional Health System.....	479-394-6100
Mena Visitor Information (A&P Commission)...	479-394-8355
Polk County Cooperative Extension Office.....	479-394-6018
Polk County Library.....	479-394-2314
Polk County Senior Center.....	479-394-6459
Rich Mountain Community College.....	479-394-7622
Ouachita Little Theatre Info Line.....	479-243-0186
Veterans Service Office.....	479-394-8147



Located in the heart of downtown at 1020 Mena Street / 479-394-4332

Places to Eat

American Artisans 615 Mena St.....	479-394-1112
Baskin Robbins 901 Hwy 71 N.....	479-394-1572
The Branding Iron 623 Sherwood Ave.....	479-437-3240
Chiquita's Mexican Restaurant 703 Hwy 71 N.....	479-394-6201
Chopping Block Steakhouse & Seafood 1156 Hwy 71 S.....	479-394-6410
Country Express 1146 Hwy 71 S.....	479-394-7310
Cruzzers Drive-In 409 Hwy 71 N.....	479-394-5550
Donut Palace 1321 Hwy 71 S.....	479-234-4564
Fish Net on the Hill 3544 Hwy 71 S.....	479-394-2385
Friendship House 517 Sherwood Ave.....	479-394-2485
The Corner 1100 Hwy 71 N.....	479-394-1120
Jame's Supersave Deli (Champs Chicken) 707 7th St.....	479-394-1799
Kentucky Fried Chicken 403 Hwy 71 N.....	479-394-5482
LaVilla Mexican Restaurant 1100 Hwy 71 N.....	479-243-0822
Limetree Restaurant 804 Hwy 71 N.....	479-394-6350
McDonald's 709 Hwy 71 N.....	479-394-1131
New China Restaurant 601 Hwy 71 N.....	479-394-5534
Papa's Mexican Cafe 1506 Hwy 71 S.....	479-394-6521
Pit Masters 2011 Hwy 71 S.....	479-437-3040
Pizza Hut 703 Hwy 71 N.....	479-394-5952
Queen's Restaurant (Queen Wilhelmina State Park) Talimena National Scenic Byway.....	479-394-2863
Simple Simon's Pizza 106 N Morrow St.....	479-394-0300
Skyline Cafe 618 Mena St.....	479-394-5152
Sonic Drive-In 1001 Hwy 71 N.....	479-437-3001
Sophie's Cafe Donuts & Grill 208 Morrow St.....	479-394-1788
Spinelli's Italian Grill 1411 Hwy 71 N.....	479-394-3737
Subway 1425 Hwy 71 S.....	479-394-2510
Inside Walmart Supercenter.....	479-394-7734
Taco Bell 403 Hwy 71 N.....	479-394-5482
Wendy's 901 Hwy 71 N.....	479-394-1572

Chopping Block Steakhouse

Fresh fish and seafood | Steaks cut daily

Popular American cuisine

Established in 1975 - www.MenaChoppingBlock.com

Hwy 71 S Mena, AR 71953 | (479) 394-6410

Rainey Day Resort B&B available for rent - www.RaineyDayResort.com

Shady Lake

You can find one of the jewels of Arkansas in Southcentral Polk County. Shady Lake is a scenic 25-acre lake in remote mountain setting.



William Rainey Photography

The Civilian Conservation Corps developed the Shady Lake Recreation Area in 1937. The Shady Lake Trail traverses Saline Creek and passes the historic Shady Lake Dam. It continues along the eastern edge of the campground. The trail is ideal for day hiking. Mountain bikers may also use the trail.

This lake is a favorite attraction for visitors and locals alike. So, if you are looking for a unique, historical, secluded and beautiful place for some great outdoor recreation, Shady Lake is a perfect destination.

Bard Springs



William Rainey Photography

In Southeastern Polk County is the beautiful Bard Springs! Settled deep in the Ouachita National Forest, Bard Springs is a small campground with Adirondack-type shelters on a small scenic stream. The recreation area provides a good site for a base camp for hikers in the Caney Creek Wilderness.

The National Registry of Historic Places names several structures within this complex as historic. The historic structures include the bathhouse, two dams, and a picnic shelter. The area serves as an amazing swimming, picnicking and camping facility.

Places to Stay

Hotels & Motels

Budget Inn 1018 Hwy 71 S.....	479-394-2400
Executive Inn 704 Hwy 71 S.....	479-394-3710
Limetree Inn 804 Hwy 71 S.....	800-536-4366
Ozark Inn Hwy 71 S.....	479-394-1100
Queen Wilhelmina State Park (Closed for Remodeling) Hwy 88 W / Talimena National Scenic Byway.....	800-264-2477
Sun Country Inn Hwy 71 N.....	877-394-7477

Bed & Breakfasts

ABear's Den 2205 Church Avenue.....	479-394-8519
The Carriage House Inn 1202 Port Arthur.....	479-243-0957
Janssen Park Place 511 9th Street.....	479-394-1880
Rainey Day Resort 1407 S Reine St.....	479-234-1273

Resort

Mena Mountain Resort 2817 Hwy 71 N.....	479-394-3110
--	--------------

Cabins, Campsites, RVs

Adventure Trails & Retreat 254 Polk 602.....	479-394-5505
ATV Trail House 2274 Hwy 375 E.....	479-394-1724
Backwoods Lodge Polk 78.....	870-818-0892
Board Camp Campground 110 Polk Rd 62.....	479-243-0771
Catfish-Rosewood Manor 269 Hwy 375 E.....	479-234-8201
Dreamland Resort 247 Hwy 375 E.....	479-216-8432



LIMETREE INN

Hwy 71 N • Mena • 479-394-6350 • www.LimetreeInn.com

Restaurant • Suites • Pool • Fitness Room • HBO
Free Local Calls • Ironing Boards • Free Coffee in Room
AARP Discounts • 32" Flat Screens • Pet Friendly
High Speed Internet • Refrigerators (available in some rooms)

RESERVATIONS ONLY CALL: **1-800-536-4366**

Clear Sky Ridge	383 Massey Ln.....	479-274-0759
CMA Cabins & RV Camping	4278 Hwy 71 S.....	870-389-6196
Cornerstone Mountain Retreat	Polk 26.....	479-216-2495
Cossatot River Wilderness Lodge		
	310 Dogwood, Wickes.....	479-385-1111 or 1112
Handi-Retreat	247 Hwy 375 W.....	479-216-8432 or 479-234-8201
Heath Valley Campground	Polk Rd 61.....	479-394-1177
Kate's Creek Cabins	Polk 675.....	479-234-3654
McCurdy's Gateway	223 Polk 64.....	479-414-8218
Meadow Pine Cabins	Hatfield.....	479-243-3752
Mena Hillside Cabins	Roadrunner Lane.....	903-643-2186
Mena Mountain Top Cabins	141 Cabins Lane.....	479-216-1598
Ouachita River Haven Resort	127 River Haven Rd.....	870-326-4941
Polk County Fairgrounds RV Park	Fairgrounds Rd.....	479-243-8104
Queen Wilhelmina State Park	Hwy 88 W.....	800-264-2477
Renegade Ranch	3680 Hwy 88 W.....	479-394-3848
Rich Mountain Lodging	158 Pine wood Lane	
Rich Mountain Log Cabins	2127 Hwy 270.....	479-243-9400
Riverside Retreat	Polk 153.....	479-234-1926
Shadow Mountain RV	Park 3708 Hwy 71 S.....	479-394-6099
Shadow Rock Cabin Resort	1216 Polk 602.....	479-243-5720
Shady Lake Recreation Area	Hwy 246	
Sugar Creek Lodge	135 Polk 602.....	866-394-7747
Ward Mountain Lodge	126 Polk 453.....	479-234-8356
Willowbrook Cottage & Cabins	1047 Polk 42.....	479-883-5492
Wolf Pen ATV Campground	559 Polk 61.....	479-883-5492
Wolf Pen Cabins	1255 Polk 61.....	214-505-5461
Wolf Pen Creek Cabins	1314 Polk 61.....	479-394-1844
Wolf Trail Cabins	118 Roadrunner Lane.....	817-999-8449

**Dreamland
Vacation Resort**

Catfish-Rosewood Manor
 Castle on the Hill
 Noah's Ark
 Shady Cabana
 Handi-Retreat
 Back to Africa

479.216.8432 or 479.234.8201
 247 Hwy 375 SE Mena, AR 71953
 www.catfish-rosewoodmanor.com



Photos by Frank Nicolosi

Aubrey D. Tapley Park



This sports complex is a 74 acre park which was started by the Mena Advertising and Promotion Commission in 2003. It was named Aubrey D. Tapley Park in 2009. It currently houses 5 baseball/softball fields, soccer fields, a walking/biking trail, concession facilities including a pavilion and two playgrounds. Grants are continually applied for to continue progress on the complex. The complex is the venue for community events such as the Annual 4th of July Celebration and multiple baseball/softball and soccer tournaments each year.



*"Autumn is a second spring
when every leaf is a flower."*

-Albert Camus



RICH  **MOUNTAIN**
COMMUNITY COLLEGE

1100 College Drive
Mena, AR 71953
479.394.7622
www.RMCC.edu



Mena

|

Mount Ida

|

Waldron



Mena Advertising & Promotion Commission
479-394-8355
www.VisitMena.com